

Saddle Horse Adoption

Northern Nevada Correctional Center

Saturday, February 21, 2009



Preview 17 Horses 9:00 a.m. – 10:00 a.m.
Competitive-Bid Adoption Begins – 10:00 a.m.

Bids start at \$150.
Adopters must meet qualifications to bid.

**Directions to the
Northern Nevada Correctional Center on the south side of Carson City:**

From U.S. 395 (Carson Street), take Snyder Avenue (NV State Route 518) east for 1.5 miles
Turn south (right) at the Center sign and watch for parking signs at the far south end of the facility

Sponsored by:
Bureau of Land Management
Nevada Department of Agriculture
Nevada Department of Corrections - Silver State Industries

ABSOLUTELY NO BLUE CLOTHING, BLUE JEANS, TANK TOPS OR SHORTS



Grumpy

BLM # 8678

Age: 6

Height: 15.3 hands

Weight: 1,150 lbs.

HMA of Origin: Rock Creek

Grumpy is a six-year old brown gelding.



Glider

BLM # 1938

Age: 4

Height: 15.2 hands

Weight: 1,000 lbs.

HMA of Origin: Augusta Mtns.

Glider is a four-year old sorrel.



Quicksilver

BLM # 8207

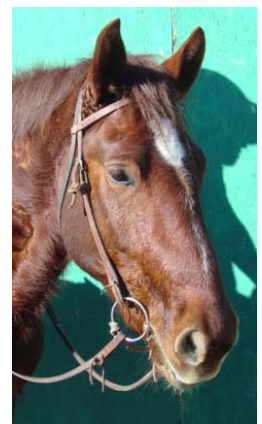
Age: 4

Height: 15.2 hands

Weight: 1,100 pounds

HMA of Origin: Red Rock

Quicksilver is a four-year old gelding.





Muddy Waters

BLM # 2282

Age: 4

Height: 15.2 hands

Weight: 1,050 lbs.

HMA of Origin: Roberts Mtns.

Muddy Waters is a four-year old bay gelding.



Howzee

BLM # 8294

Age: 4

Height: 14.3 hands

Weight: 900 lbs.

HMA of Origin: Red Rock

Howzee is a four-year old red roan gelding.



Pac-Man

BLM # 1649

Age: 4

Height: 14.2 hands

Weight: 900 lbs.

HMA of Origin: Jackson Mtns.

Pac-Man is a four-year old buckskin gelding.





Joe Dirt

BLM # 1977

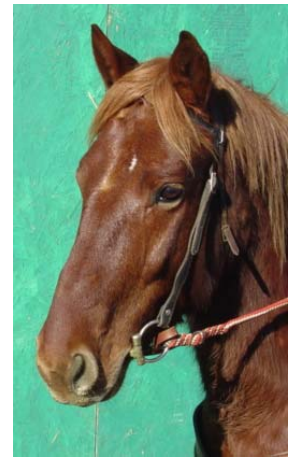
Age: 4

Height: 15.0 hands

Weight: 1,000 lbs.

HMA of Origin: Augusta Mtns.

Joe Dirt is a four-year old sorrel gelding with a flaxen colored mane and tail.



Half Pint

BLM # 2285

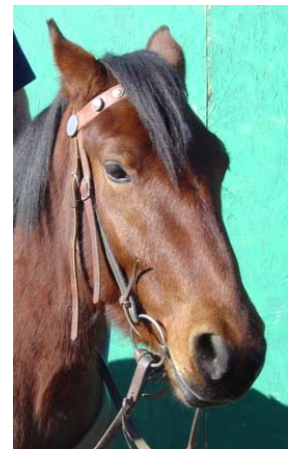
Age: 3

Height: 14.2 hands

Weight: 800 lbs.

HMA of Origin: Roberts Mtns.

Half Pine is a three-year old bay gelding.



Brodie

BLM # 1963

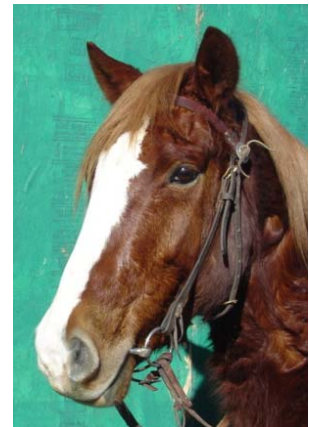
Age: 4

Height: 15.1 hands

Weight: 1,100 lbs.

HMA of Origin: Augusta Mtns.

Brodie is a four-year old sorrel gelding.





Lucky

BLM # 1985

Age: 4

Height: 14.2hands

Weight: 900 lbs.

HMA of Origin: Augusta Mtns.

Lucky is a four-year old red dun gelding.



Patch

BLM # 4103

Age: 5

Height: 15.0 hands

Weight: 1,050 lbs.

HMA of Origin: Butte

Patch is a five-year old sorrel gelding.



Ranger

NV # 4042

Age: 5

Height: 15.0 hands

Weight: 1,000 lbs.

HMA of Origin: Butte

Ranger is a five-year old sorrel gelding.





Key-J

NV # 1339

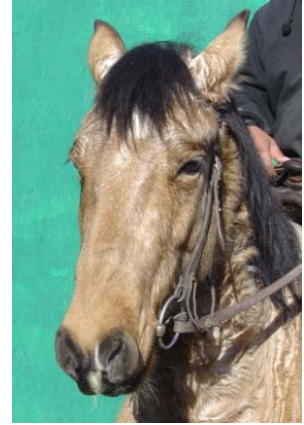
Age: 4

Height: 14.1 hands

Weight: 750 lbs.

Origin: Virginia Highlands (Estray)

Key-J is a four-year old buckskin gelding.



Little Foot

Nevada Estray #1334

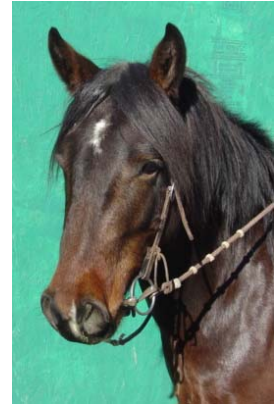
Age: 4

Height: 14.0 hands

Weight: 750

Origin: Virginia Highlands (Estray)

Little Foot is a four-year old sorrel gelding.



Midnight

Nevada Estray #1340

Age: 3

Height: 14.1 hands

Weight: 700

Origin: Virginia Highlands (Estray)

Midnight is a three-year old sorrel gelding.





Lil Duke

Nevada Estray #1326

Age: 8

Height: 14.0 hands

Weight: 750

Origin: Virginia Highlands (Estray)

Lil Duke is an eight-year old dark bay gelding.



Bird Dog

BLM #7492

Age: 6

Height: 16.0 hands

Weight: 1,150

HMA of Origin: Little Humboldt

Bird Dog is a six-year old palomino gelding.



Frequently Asked Questions

Why can't I wear blue jeans to the Northern Nevada Correctional Facility?

- This is a security issue and for the public's personal safety. Prison inmates wear blue jeans that allow security guards to readily distinguish between inmates and the public.

Can we preview the horses available for adoption before the sale date?

- No, since this a prison facility horses cannot be viewed until the morning of the adoption.

Do I have to be present to adopt a wild horse? Can I send my friend?

- You must be present to adopt a wild horse. You cannot send a family member or a friend.

What is the average sale price of horses trained by prison inmates?

- Prices vary widely. The starting bid for any wild horse is \$150, and the bid can go as high as \$4,000. However, the average price is about \$800 to \$1,000 per animal. It really depends on how many people are interested in one particular animal and what they are looking for in an animal.

How much training do the horses actually have?

- These horses are green-broke which means they have received 60-90-120 days training by the prison inmates. These horses will continue to need daily training to reinforce the basics they have learned.

What are the facility requirements?

- Even though these horses are green broke, each horse should be kept in a pen no larger than 20' X 20' until the animal gets used to its new surroundings and you. The corral should be at least 5-foot high and of heavy duty construction using poles, pipes, or planks with at least 1 ½ inch thickness and without dangerous protrusions. Barbed wire and large-mesh-woven, stranded, and electric materials are unacceptable for fencing.
- You must also provide shelter from inclement weather and temperature extremes for your adopted wild horse. The shelter must have, at a minimum, two sides with a roof, good drainage, adequate ventilation, and access for the animal. Tarps are not acceptable.

Do I have to pick up the horse I adopt the day of the adoption?

- BLM prefers you take the horse home that day, but special arrangements can be made with the prison to pick up the animal in a couple of days. **Also, horses will be loaded into stock-type trailers only (two horse trailers can not be used).**

Can I get a refund or exchange my adopted horse for another in the future?

- No refunds, credits or exchanges will be approved. For more information on this policy, or about adopting a prison-trained horse, contact:
- Susie Stokke, BLM-Nevada State Office, (775) 861-6623
- Hank Curry, Nevada State Prison Department, (775) 684-3026 or Tim Bryant at (775) 887-9331

Bureau of Land Management Adoption Requirements at a Glance:

- Must be 18 years old. Parents or guardians may adopt and allow a younger family member to care for the animal.
- Have no prior conviction for inhumane treatment of animals or for violating the Wild Free-Roaming Horse and Burro Act.
- Have adequate feed, water and facilities (at least 400 square feet for each animal) to provide humane care for the number of animals requested.
- Provide a home for the animal in the United States until you receive Certificate of Title from the BLM.

What's a wild horse and what's an estrays?

A wild horse, as defined by federal law, is an unbranded, unclaimed, free-roaming horse found on **public lands** in the United States. A 1971 Congressional Act gave the Department of the Interior's Bureau of Land Management the charge to manage, protect and control wild horses in order to ensure healthy herds and healthy rangelands.

A **State of Nevada estray** is a horse that lives on state lands under the jurisdiction of the State of Nevada Department of Agriculture and is managed through a consortium of agreements with established wildlife protection organizations and the State Department of Corrections and its Silver State Industries program. Most estrays are found in the Virginia City area.

About the Northern Nevada Correctional Center program:

The gentling program in Carson City began in October 2000. It is a cooperative effort shared by Silver State Industries (the Nevada Department of Corrections industries program) and the Nevada Department of Agriculture. Originally the program trained only estrays, but through an agreement, inmates now also train BLM wild horses.

To download a BLM adoption application (Form 4710-10) for a wild horse or burro, please go to:
http://www.blm.gov/style/medialib/blm/wo/Planning_and_Renewable_Resources/wild_horses_and_burros/adoption_application.Par.32707.File.dat/BLM_4710-010.pdf

For more information on adopting a prison-trained horse, contact:

Susie Stokke
Bureau of Land Management
Nevada State Office
1340 Financial Blvd.
Reno, NV 89520
(775) 861-6623

Hank Curry
Nevada State Prison Department
P.O. Box 7000
Carson City, NV 89701
(775) 781-8861
or Tim Bryant at (775) 887-9331



Upcoming Wild Horse Adoption Events in Nevada

Upcoming Saddle-Trained Horse
Adoption at the Northern Nevada
Correctional Center in Carson City:

May 30, 2009

Contact: Susie Stokke, (775) 861-
6623.

National Wild Horse & Burro Center at
Palomino Valley
Located at 15780 State Route 445
(Pyramid Highway), about 20 miles
north of Sparks
(775) 475-2222

*Open Monday-Fridays 8-4:30 p.m. and
Sat 8-Noon (by appointment).